

SiteGard®

DOUBLE-LEAF SITE GATE

Effectively secure vehicle entrances at your site with the Alexandra Security double-leaf SiteGard gate.

Available in sizes from 3m wide, all the way up to 8m wide, these gates can be installed using either dig-in, base-plated or strapped posts, allowing for a secure install no matter the type of ground at your site.

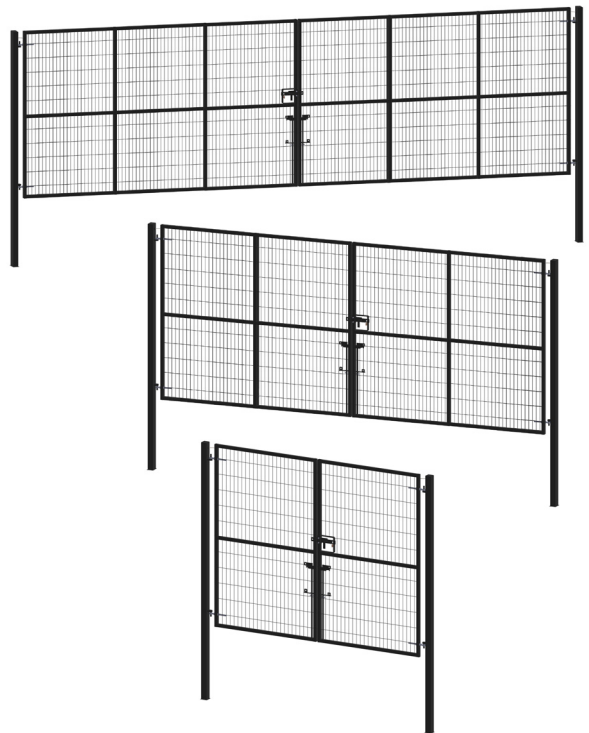
In the construction sector, SiteGard gates have earned their reputation as the preferred choice for reusable, high-quality site gates.

With common sizes available from stock, the double-leaf variation can be rapidly deployed on site, while the powder-coated finish, ensures their longevity even in the most demanding temporary site environments.

If you require a non-standard size or height, we have the facility to custom manufacture SiteGard gates to match, on a short lead-time.



The flat mesh on SiteGard allows for timber to be clad over the top of the gate frame (holes included). This provides an extra level of protection and privacy.



Wind loading tested



Temporary works approved



Dig-in or strapped post mounting



Mesh clad with holes for timber



Powder-coated for lasting finish

Width (nominal - m)	Height (m)	Gate Frame	Posts	Overall Length of Post (m)	Mesh Aperture Size	Cladding
3.14	2.4	40mm SHS	80mm SHS	3.2	200 x 50mm	Cladding supplied / fitted on site by user
4.14	2.4	40mm SHS	120mm SHS	3.2	200 x 50mm	
5.03	2.4	40mm SHS	120mm SHS	3.2	200 x 50mm	
6.14	2.4	40mm SHS	120mm SHS	3.2	200 x 50mm	
8.20m	2.4	40mm SHS	120mm SHS	3.2	200 x 50mm	

SiteGard®

DOUBLE-LEAF SITE GATE

Product & Finish Standards

- Gate frame and posts powder coated black.
- All stock gates come as standard at 2.4m high and are clad with flat weld-mesh.
- Gate sets includes 2No. gate leaves, 2No. dig-in type posts, pad-lockable slide-latch, 2No. drop-bolts complete with ground sleeves and 4No. adjustable hinges.
- All stock gates come with Safety Gate Restrainers as standard.

Loadings

This structure has been designed in accordance with the following guidance:

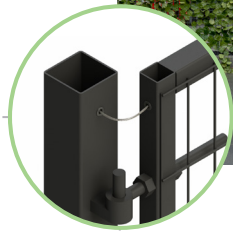
- BS EN 1991-1-4:2005 - Wind Actions & TG20-13 Wind Guidance
- BS 5975:2008 - Code of practice for temp. works procedures and the permissible stress design of falsework
- BS 6180:2011 - Table 2
- TWf 2012:01 HOARDINGS: A guide to good practice
- BS EN 1990 - Basis of structural design
- BS EN 1993-1-1 Design of steel structures- General rules and rules for buildings
- BS EN 1990 - Basis of structural design
- BS EN 5950 - Steel member design

Options

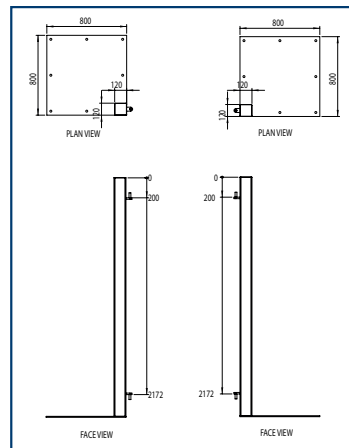
- Base plated posts (where soft dig isn't an option)
- Strapped posts (to bolt to pre-formed concrete blocks)
- Gatmaster Locks & Self-Closers
- Bespoke height and widths available to order as per customers requirements



While care has been taken to ensure that all information provided on this data sheet is accurate, Alexandra Security reserves the right to change product specifications at any time. E&OE.



Base Plated Posts



Straps To Concrete Blocks

