

SiteGard®

PEDESTRIAN SITE GATE

Using dedicated entrances for foot traffic instead of having them go through vehicle gates can greatly improve site access and flow.

SiteGard single leaf pedestrian gates offer a secure and convenient solution, fitting seamlessly between hoardings or as a separate entrance beside larger vehicle gates. These gates are easier to install than turnstiles and can be access controlled with a digital lock and quick access push-pad.

Like all SiteGard gates, the pedestrian version can be securely mounted onto concrete blocks using our unique strapped post system. The frame includes pre-drilled holes for timber cladding or privacy screening.

If you need a larger single leaf gate to fit a specific opening, we can custom manufacture a SiteGard gate to your exact specifications.



 **MADE IN BRITAIN**

The flat mesh on SiteGard allows for timber to be clad over the top of the gate frame (holes included). This provides an extra level of protection and privacy.



Wind loading tested



Temporary works approved



Dig-in or strapped post mounting



Mesh clad with holes for timber



Powder-coated for lasting finish

Width (nominal - m)	Height (m)	Gate Frame	Posts	Overall Length of Post (m)	Mesh Aperture Size	Cladding
1.3	2.4	40mm SHS	80mm SHS	3.3	200x50mm	Cladding supplied / fitted on site by user

DATA SUBJECT TO CHANGE

SiteGard®

PEDESTRIAN SITE GATE

Product & Finish Standards

- Gate frame and posts powder coated black.
- All stock gates come as standard at 2.4m high and are clad with flat weld-mesh.
- Gate set includes 1No. gate leaf, 2No. dig-in type posts, pad-lockable slide-latch and 2No. adjustable hinges.
- All stock gates come with Safety Gate Restrainers as standard.

Loadings

This structure has been designed in accordance with the following guidance:

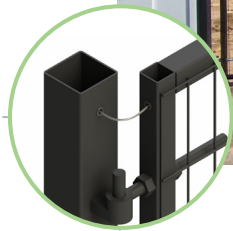
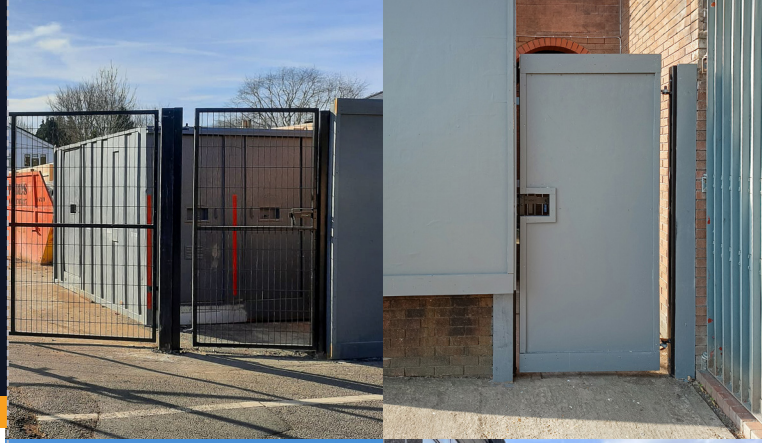
- BS EN 1991-1-4:2005 - Wind Actions & TG20-13 Wind Guidance
- BS 5975:2008 - Code of practice for temp. works procedures and the permissible stress design of falsework
- BS 6180:2011 - Table 2
- TWf 2012:01 HOARDINGS: A guide to good practice
- BS EN 1990 - Basis of structural design
- BS EN 1993-1-1 Design of steel structures - General rules and rules for buildings
- BS EN 1990 - Basis of structural design
- BS EN 5950 - Steel member design

Options

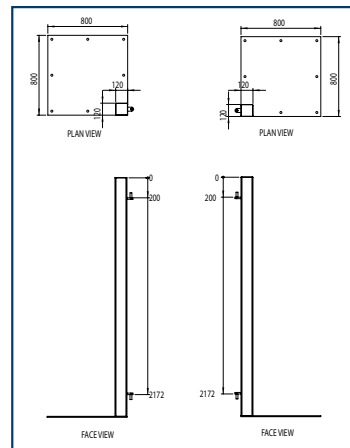
- Base plated posts (where soft dig isn't an option)
- Strapped posts (to bolt to pre-formed concrete blocks)
- Gatmaster Locks & Self-Closers
- Bespoke height and widths available to order as per customers requirements



While care has been taken to ensure that all information provided on this data sheet is accurate, Alexandra Security reserves the right to change product specifications at any time. E&OE.



Base Plated Posts



Straps To Concrete Blocks

