



SiteGard CraneGard

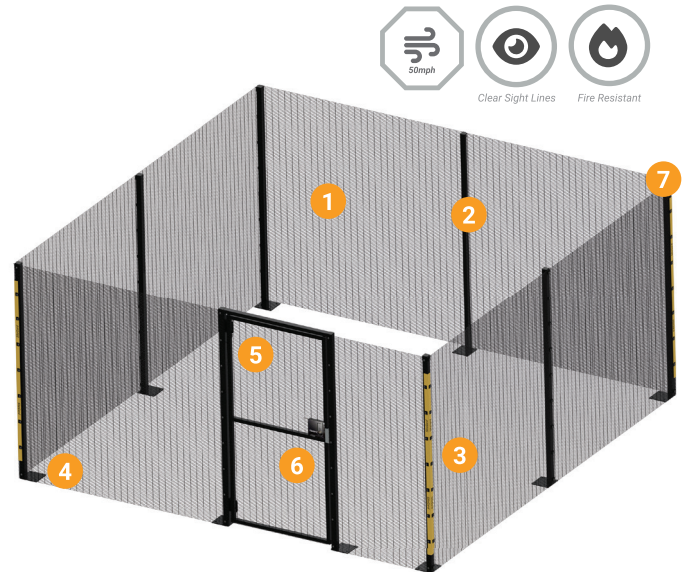
Tower Crane Protection and Access Control

CraneGard provides easy to install, anti-climb protection around the base of tower cranes, creating a defined safety barrier and preventing unauthorised access to the crane structure.

CraneGard's 2.4 or 3.0 meter high base-plated compound forms a formidable anti-climb barrier, thanks to the tightly spaced apertures of its 358 weld-mesh panels. Unlike timber hoarding surrounds, CraneGard offers fire resistance as well as clear visibility into the compound, enhancing safety, greatly reducing wind-loading, and enabling 360° visual maintenance inspections.

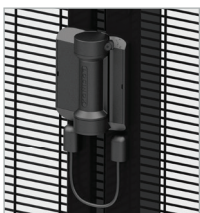
The modular 2.6m to 5.1m enclosure allows for sufficient space for personnel to walk around the crane mast. In addition, the access door can be configured to open either inwards and outwards, to maximise the available space and fit the site layout.

Access into the compound is facilitated through either a key lock or digital lock, fitting with a surround. A quick-release push-pad on the inside of the gate provides a safe, unassisted exit.



1. **Mesh Panel:** Mesh size 12.5 x 76.2mm - 4mm wire
2. **Post Size:** 60 x 60mm SHS with 200 x 200mm Base Plates
3. **Metal Clips and Corner Protector**
4. **200 x 200mm Base Plates**
5. **Access Gate With Self-Closing Hinges & Gate Restrainer**
6. **Lock Options:** Key or Digital with Quick Release Push-Pad
7. **Cranked and Straight Post Extensions**

Self Closing Hinge
& Gate Restrainer



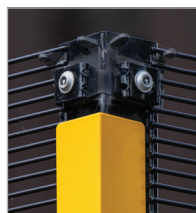
Anti-Climb Bottom
Hinge



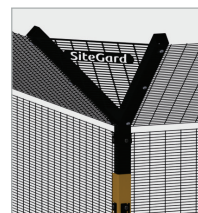
Corner Post
Protector



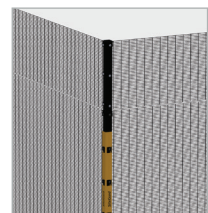
Hooked Clips To
Assist Installation



Cranked Post
Extensions



Straight Post
Extensions



Specification

Nominal Fence Height (m)	Panel Size Height x Width (mm)	Overall Dimensions (m)	Mesh Type	Overall Length of Post (mm)	Post Size (mm)	Number of Fixings	
						Ends/Inters (Clips)	Corners (Clips)
2.4	2,442 x 2,518	2.6 x 2.6	358	2460	60 x 60	9	18
2.4	2,442 x 2,518	5.1 x 5.1	358	2460	60 x 60	9	18
3.0	2,442 x 2,518	2.6 x 2.6	358	2955	60 x 60	12	24
3.0	2,442 x 2,518	5.1 x 5.1	358	2955	60 x 60	12	24

(Extra panels and posts available separately to create custom compound sizes)

Data subject to change

Access Control Options



Digital Lock
& Push Pad

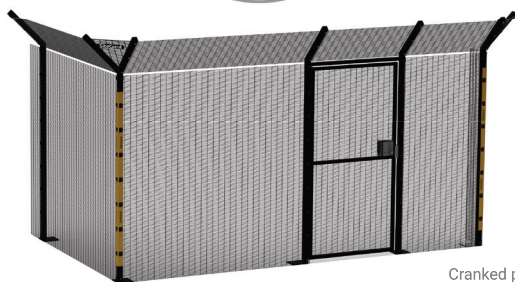
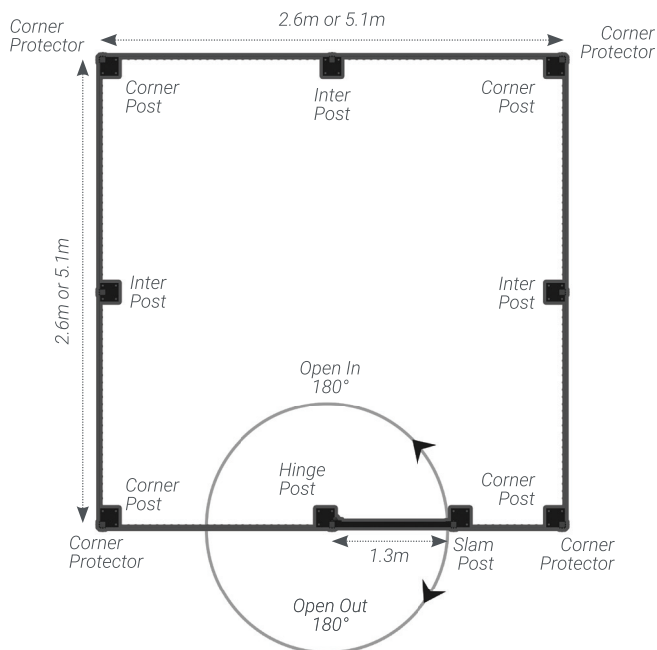


Key Lock &
Push Pad



Reversible
Hinges

Posts, Clips and Fixings



Cranked post
extensions

Alexandra Security Ltd, Perimeter Works, Whetsted
Road, Five Oak Green, Tonbridge, Kent. TN12 6PZ

www.alexandrasecurity.com | 01892 833 001

SiteGard is a registered trademark of Alexandra Security Ltd

While care has been taken to ensure that all information provided on this data sheet is accurate, Alexandra Security reserves the right to change product specifications at any time. E&OE.

Product Technical Information

Panels:



Fire Resistant

- Mesh size 12.5 x 76.2mm - 4mm wire.
- Manufactured to BS 4102 and galvanised to BS EN 10244-2:2001 class D.
- Weld strength is 75% of the minimum tensile strength of the wire (tensile range 540-690 N/m²).
- Panels powder coated RAL 9005 Black
(other colours available on request subject to lead time).

Posts:



Tested up to force 9 on
Beaufort Wind Scale

- Post size: 60 x 60mm SHS (3mm thick) base plated.
- Base plate size: 200 x 200mm. 18mm fixing holes.
- Post material manufactured to BS EN 10210-2:1997.
- Post tested to withstand wind speeds of up to 50mph.
- Supplied with 60 x 60mm plastic cap.
- Posts powder coated RAL 9005 black.

Fixings:

- Durable metal clips. Hooked insert to aid installation.
- Clips powder coated RAL 9005 black.
- M8 x 40 Fourtress tamper resistant hardened steel security screw.
- Folded corner protector: 2057 x 48.7mm.
- Corner protector powder coated RAL 1033 (Dahlia Yellow).

Gate:

- Single-leaf access gate - 1.3m wide x 2.4m high.
- 358 weld-mesh cladding.
- 50mm ground clearance at bottom of gate.
- Powder coated RAL 9005 black
(other colours available on request subject to lead time).
- Can be installed to open inwards or outwards.
- Includes self-closing hinges
- Includes lintel bar over top of gate.
- Supplied with gate restrainer (prevents gate leaf falling in the event of hinge failure).



Finishings:

- All powder coating to BS EN 13438:2005 (min 100 micron).

Options:

- Gatemaster digital lock (front face) + quick release push-pad and shroud (rear face).
- Gatemaster key lock (front face) + quick release push-pad and shroud (rear face).
- Expansion posts & mesh panels (to increase perimeter size as needed).

EXCEPTIONAL



4.7 OUT OF 5

feefo

